

Library – an Introduction

Armin Vetter, 01.10.2021

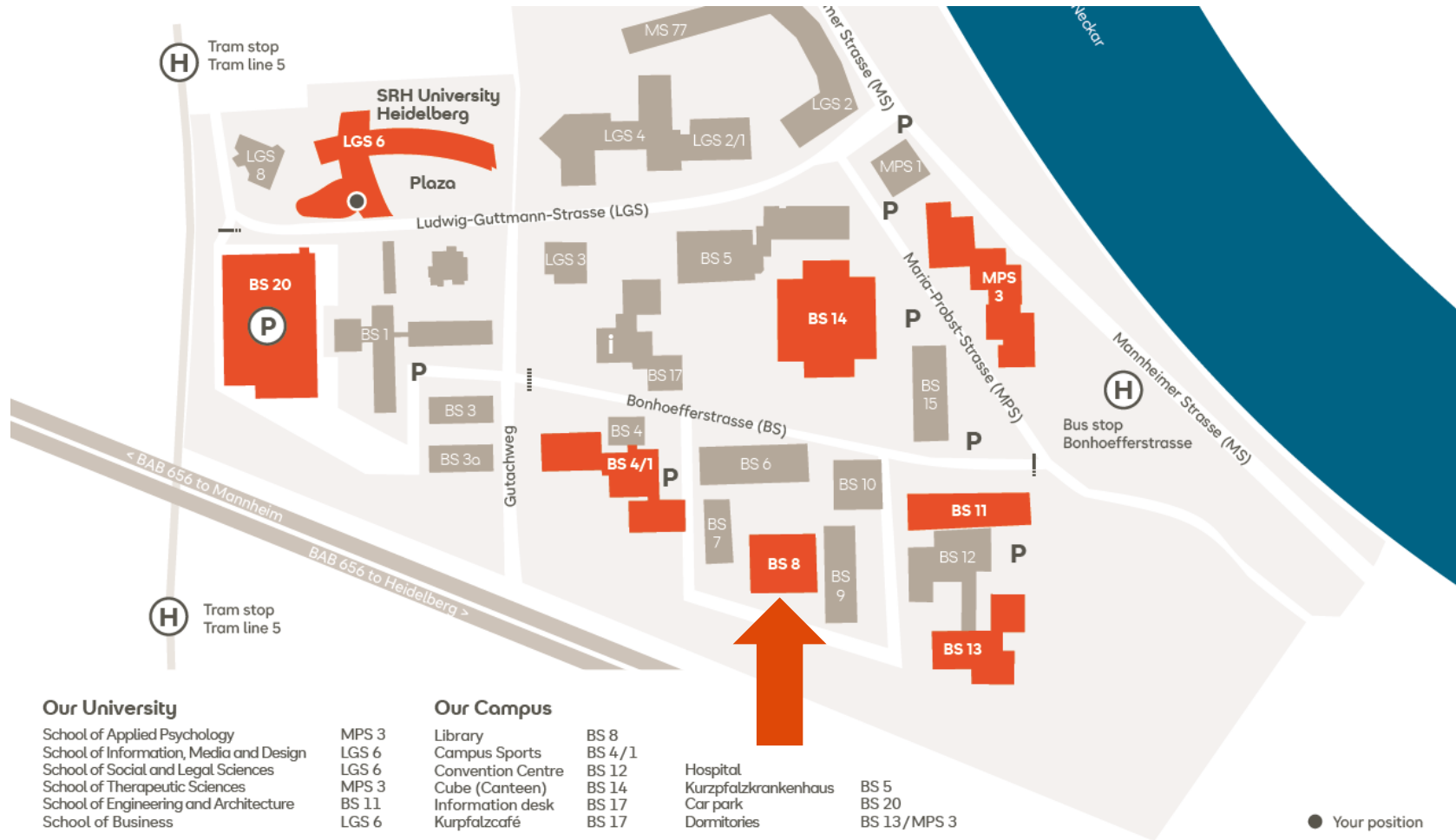
Libraries are the mental filling stations of the nation." Helmut Schmidt

Library Profile



- Literature- and information provision of the members of the university (professional scientific media - print and online)
- Collection focus: orientation at our six faculties
- Location for learning with different kinds of user workplaces
- 24/7-Library (suspended due to pandemic)

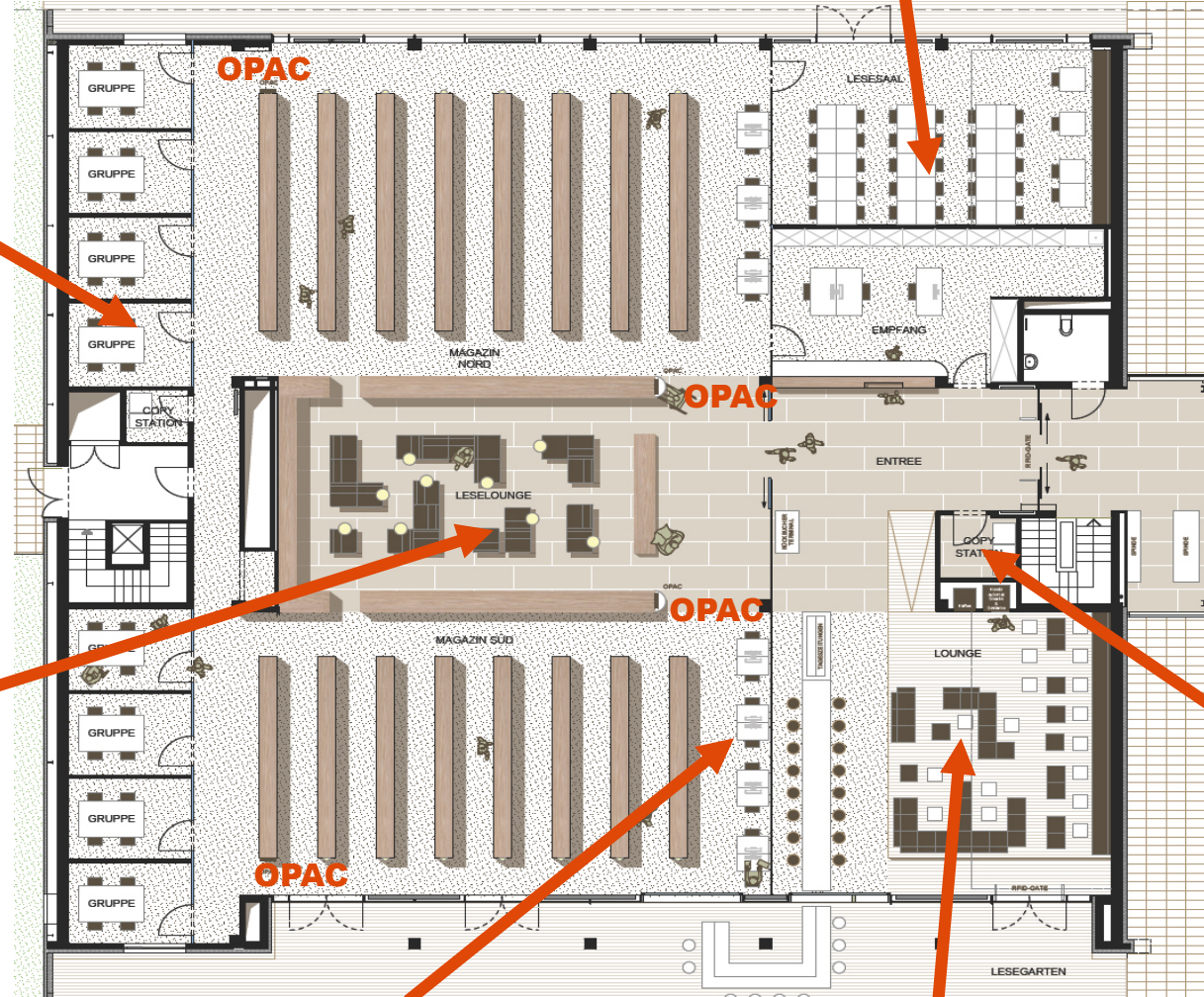
Library – a location for learning





Reading room

Group study rooms



Reading lounge

„Copy-Station“
(copier, book scanner)

Computer workplaces
(Internet, Office, ...)

Coffee-Lounge

Library holdings (print)

- Books
- Professional journals
- Videos / DVD's / CD-ROM's
- Daily and weekly newspapers

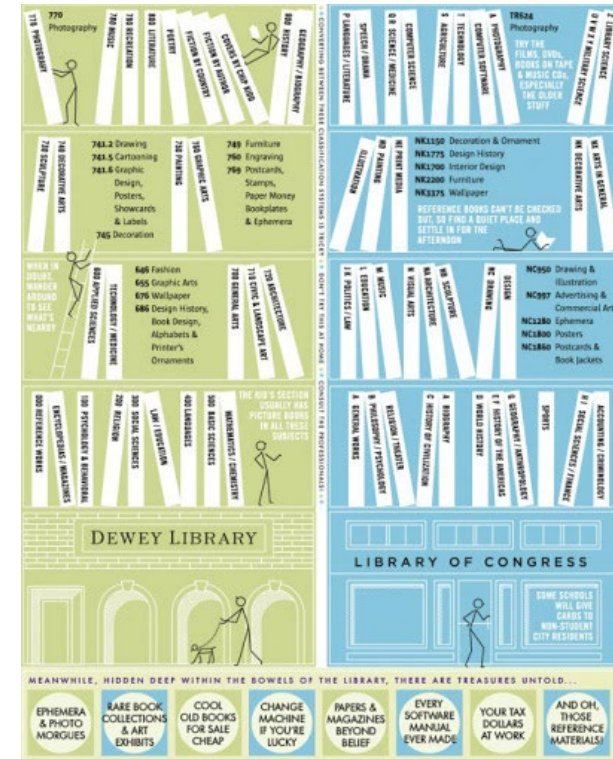
= about 40.000 media units

(collection development in responsibility of the faculties)

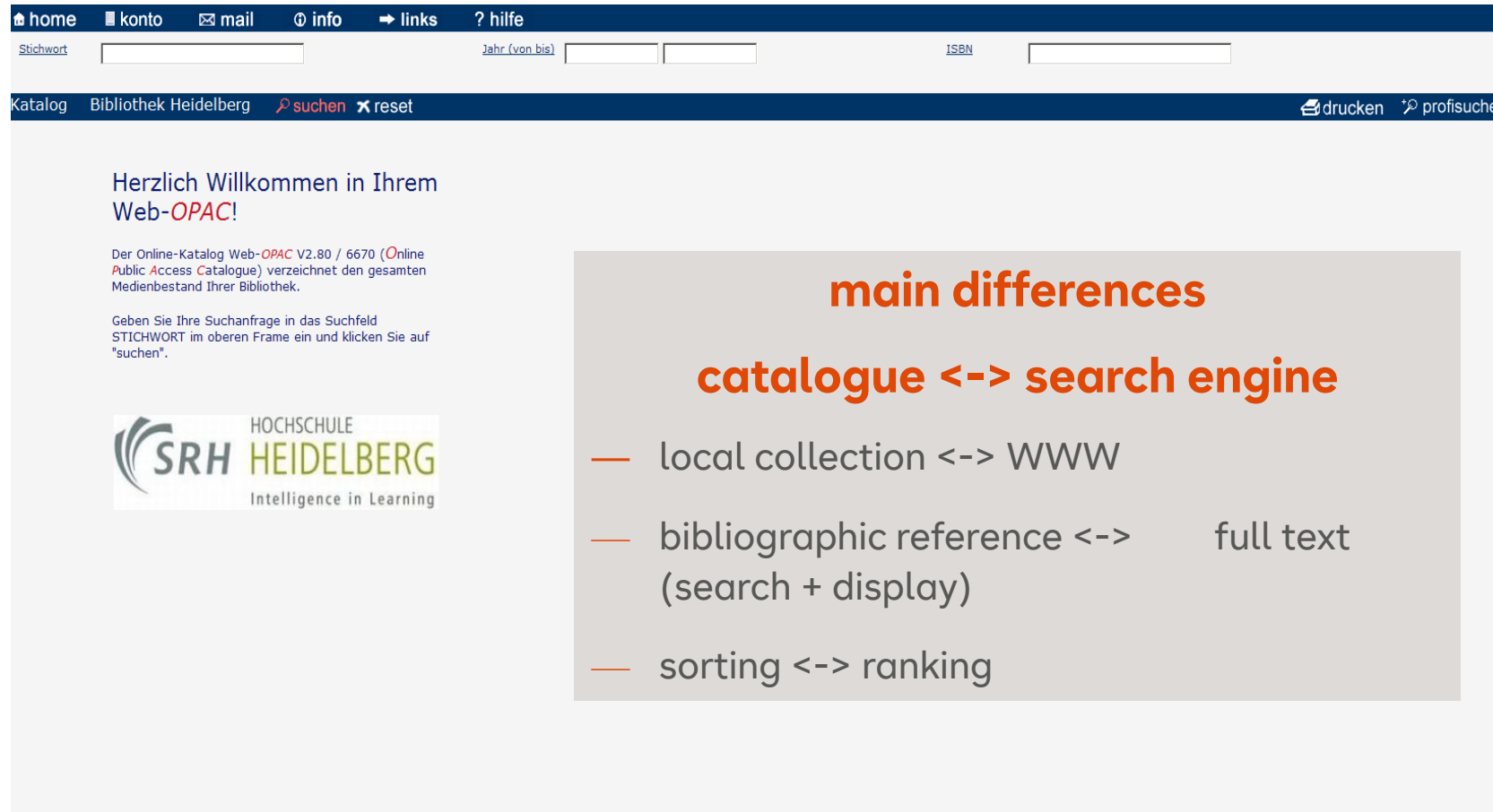


Book shelving

- Most of the collection is freely accessible
- Classified arrangement of books (exception: professional journals)
- Guidance system:
 - Specific subject group on the shelves
 - Location of a particular book via signature (following catalogue research)



Catalogue Research: OPAC (Online Public Access Catalogue)



home konto mail info links hilfe


Stichwort Jahr (von bis) ISBN

Katalog Bibliothek Heidelberg suchen reset drucken profisuche

Herzlich Willkommen in Ihrem Web-*OPAC*!

Der Online-Katalog Web-*OPAC* V2.80 / 6670 (Online Public Access Catalogue) verzeichnet den gesamten Medienbestand Ihrer Bibliothek.

Geben Sie Ihre Suchanfrage in das Suchfeld STICHWORT im oberen Frame ein und klicken Sie auf "suchen".

 HOCHSCHULE SRH HEIDELBERG Intelligence in Learning

main differences

catalogue <-> search engine

- local collection <-> WWW
- bibliographic reference <-> full text (search + display)
- sorting <-> ranking

Virtual Library Holdings

„Digital Library “

- Databases
- E-Journals
- E-Books

= „more than Google“

= certified scientific information



Campus Access: Homepage (Intranet)

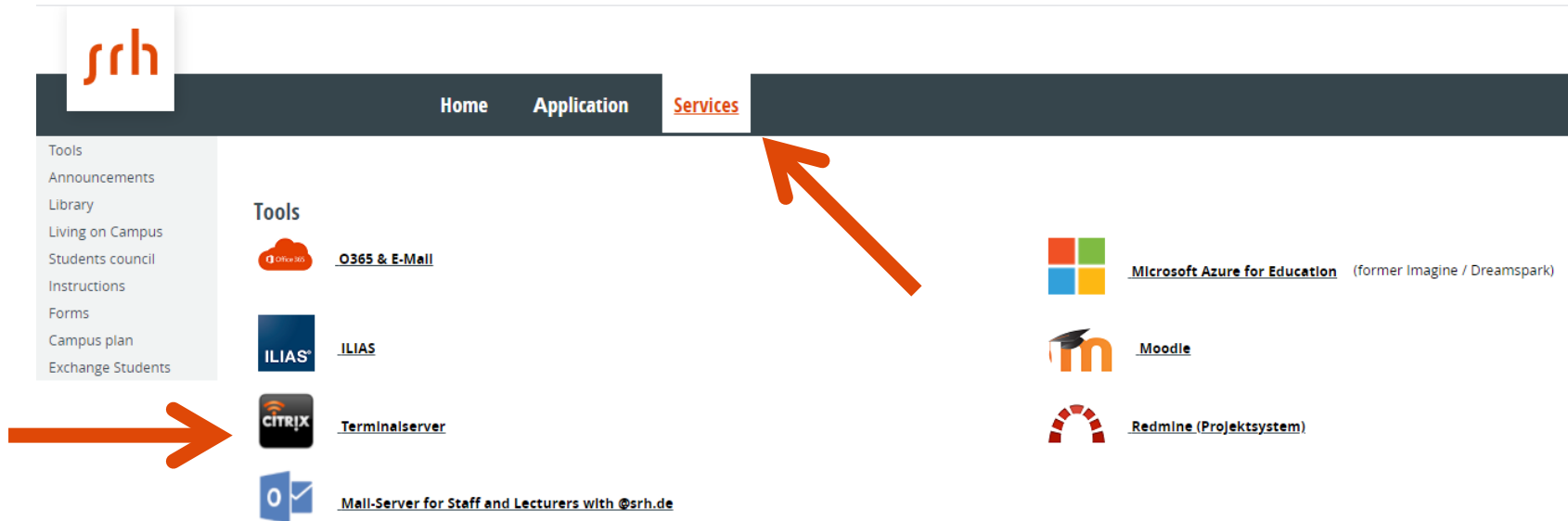


Our university library

The Library is the central facility providing the University's researchers, teachers and students of all Schools with specialized literature and information.

<https://www.hochschule-heidelberg.de/en/study-at-srh/eat-live-and-learn-on-campus/library/>

Remote Access : CITRIX-Desktop + Homepage (Intranet)



The screenshot shows the SRH intranet homepage. At the top left is the SRH logo. A dark navigation bar contains the links 'Home', 'Application', and 'Services'. Below this is a left-hand menu with items like 'Tools', 'Announcements', 'Library', etc. The main content area features a 'Tools' section with several service tiles: 'O365 & E-Mail', 'ILIAS', 'Terminalserver', 'Mail-Server for Staff and Lecturers with @srh.de', 'Microsoft Azure for Education', 'Moodle', and 'Redmine (Projektsystem)'. Two orange arrows point to the 'Services' menu item and the 'Terminalserver' tile.

<https://campus.hochschule-heidelberg.de/>

Questions regarding your application?

SRH University Heidelberg - Admission Office & Student Advisory Service
Ludwig-Guttman-Str. 6
69123 Heidelberg

Telephone: +49 6221 6799 799
E-Mail to: studyinheidelberg@srh.de

Questions regarding your current studies?

SRH University Heidelberg - Central Student Service
Ludwig-Guttman-Str. 6
69123 Heidelberg

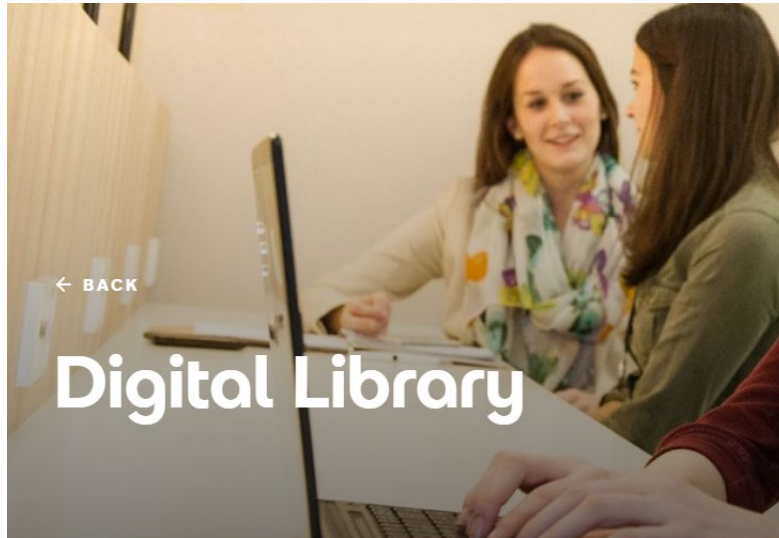
Telephone: +49 6221 6799 000
E-Mail to: info.hshd@srh.de

Remote Access : CITRIX-Desktop + Homepage (Intranet)



<https://www.hochschule-heidelberg.de/en/study-at-srh/eat-live-and-learn-on-campus/library/>

Remote Access : CITRIX-Desktop + Homepage (Intranet)



- Databases
- E-Journals
- E-Books

<https://www.hochschule-heidelberg.de/en/study-at-srh/eat-live-and-learn-on-campus/library/digital-library/>

Access to electronic sources

E-Books



WISO

News | FAQ | Hilfe | Quellenliste | Thesaurus

Mein wiso Anmelden

Merkliste (0)

Alle Medien (14.194.155)

eBooks (1.564)

Haufe Verlag (363)

Rainer Hampp Verlag (262)

Duncker & Humblot (222)

Diplomica Verlag (200)

Gabal Verlag (141)

und weitere...

Fachzeitschriften (6.077.233)

Literaturnachweise (8.115.358)

Neue Funktionen

Thesaurus Psychologie
Ab sofort mit dem Fachthesaurus der American Psychological Association.

Trefferliste der Literaturnachweise
Jetzt nach Autoren und Themen filtern.

Datenbank-Infosystem (DBIS)
SRH Hochschule Heidelberg, Bibliothek

SRH HOCHSCHULE HEIDELBERG

Home Elektronische Zeitschriften

ABCDEFGHIJKLMNOPQRSTUVWXYZ

erweiterte suche Go

Datenbanken mit 'A' (1 Treffer)

ABC der deutschen Wirtschaft Zugang
frei im Web

Datenbanken mit 'B' (5 Treffer)

Beck-online : die Datenbank Zugang
Hochschulnetz

Biographie-Portal frei im Web

BioOne / BioOne Online Journals Archiv deutschlandweit frei

Brill / Human Rights and Humanitarian Law E-Books Online; International Law E-Books Online deutschlandweit frei

Business Source Premier (via EBSCOhost) Hochschulnetz

FACHÜBERSICHT

ALPHABETISCHE LISTE

BIBLIOTHEKSAUSWAHL / EINSTELLUNGEN

ÜBER DBIS

PROJEKTSEITE

Elektronische Zeitschriftenbibliothek
SRH Hochschule Heidelberg, Bibliothek

SRH HOCHSCHULE HEIDELBERG

Der Service EZB English Hilfe FAQ Über die EZB

Zeitschriften

nach Fächern

alphabetisch

erweiterte Suche

neu in der EZB

Zeitschriftentitel

Bibliotheksauswahl

Einstellungen

Kontakt

Ansprechpartner

Titelvorschlag

73966 Titel

Volltextzeitschriften alphabetisch geordnet

A B C D E F G H I J K L M N O P Q R S I U
V W X Y Z

— F.A.Z. Wirtschaftswissenschaft (via wiso)...

- [F.A.Z. Wirtschaftswissenschaft \(via wiso\)](#)
- [F+H Fördern und Heben \(via wiso\)](#)
- [F.LM – Texte zum Film](#)
- [F & N Tests \(Fungicide and Nematicide Tests\)](#)
- [F@ro. Revista Teórica del Departamento de Ciencias de la Comunicación](#)
- [F. Scott Fitzgerald Review. The](#)
- [F1000 Prime Reports](#)
- [F1000 Research](#)
- [Fa Shang Yan Jiu = Studies in Law and Business](#)
- [Fa Yi Xue Za Zhi = Journal of Forensic Medicine](#)
- [FABAD Journal of Pharmaceutical Sciences](#)

Suche nach Zeitschriften

Zeitschriftentitel

[erweiterte Suche](#)

Die Volltexte der Zeitschriften sind

- frei zugänglich
- für Angehörige der SRH Hochschule Heidelberg freigeschaltet
- nur für einen Teil der erschienenen Jahrgänge zugänglich
- nicht zugänglich

[Nutzungsbedingungen](#)

eBooks (in English): „EBSCO eBook Collection“ + „ProQuest Ebook Central“



New Search Dictionary eBooks Sign In Folder Preferences Languages Ask-A-Librarian Help

Searching: **eBook Collection (EBSCOhost)** | Choose Databases Logout

EBSCOhost

Basic Search Advanced Search Search History

<https://www.hochschule-heidelberg.de/en/study-at-srh/eat-live-and-learn-on-campus/library/digital-library/>

Refine Results Search Results: 1 - 10 of 231 Relevance Page Options Share

Current Search

Boolean/Phrase: all

Expanders Apply equivalent subjects

1. Performance Management Success : A Best Practices and Implementation Guide for Leaders and Managers of All Organizations

By: Barth, Anthony L.; De Beer, Wiaan. Series: Management for Professionals. Cham, Switzerland : Springer. 2018. eBook.

Subjects: BUSINESS & ECONOMICS / Management; BUSINESS & ECONOMICS / Strategic Planning; BUSINESS & ECONOMICS / effectiveness; Performance--Management; Leadership; Employee motivation

PDF Full Text Full Download Bestandsabfrage

ProQuest Ebook Central Suchen Bücherregal Einstellungen

Schlagwort, Autor, ISBN und mehr Erweiterte Suche Themenbereiche durchsuchen SRH Holding

Suche 37 Buch-Ergebnisse

Ihre Einschränkungen: SPRACHE Englisch Löschen

ERSCHEINUNGSJAHR

- 2018 2
- 2017 2
- 2016 6

Mehr anzeigen

THEMA

- music / general 12
- psychology / psychotherapy / general 6
- psychology / general 5
- psychology / neuropsychology 3

Mehr anzeigen

SPRACHE

- Deutsch 123

Buch-Ergebnisse Kapitel-Ergebnisse

The Essentials of Theory U : Core Principles and Applications
Scharmer, C. Otto Berrett-Koehler Publishers, Incorporated 2018
ISBN: 9781523094424 Verfügbar

Business Models in the Circular Economy : Concepts, Examples and Theory
De Angelis, Roberta Palgrave Macmillan UK 2018
ISBN: 9783319751269, 9783319751276 Verfügbar

The Sustainable City
Cohen, Steven Columbia University Press 2017

- EBSCO-Subject Sets
- Business 2018
- Computer Science 2018
- Civil Engineering 2018
- Electrical Engineering 2017 + 2018
- Energy & Green Technologies 2017 + 2018
- Leadership & Management 2018
- Mechanical Engineering 2017 + 2018
- Psychology 2017 + 2018

Rules and Regulations

A wide-angle photograph of a modern library interior. The room is filled with tall, light-colored wooden bookshelves that reach up to the ceiling. The shelves are densely packed with books. In the center of the room, several people are seated on modern, grey upholstered armchairs. Some are reading, while others are talking. A man in a blue shirt is reading a book on a small table in front of him. Another man in a purple shirt is looking at his phone. The floor is made of light-colored, square tiles. The ceiling is white with several large, cylindrical pendant lights hanging from it. The overall atmosphere is bright and quiet, typical of a library.

Behavior in the library

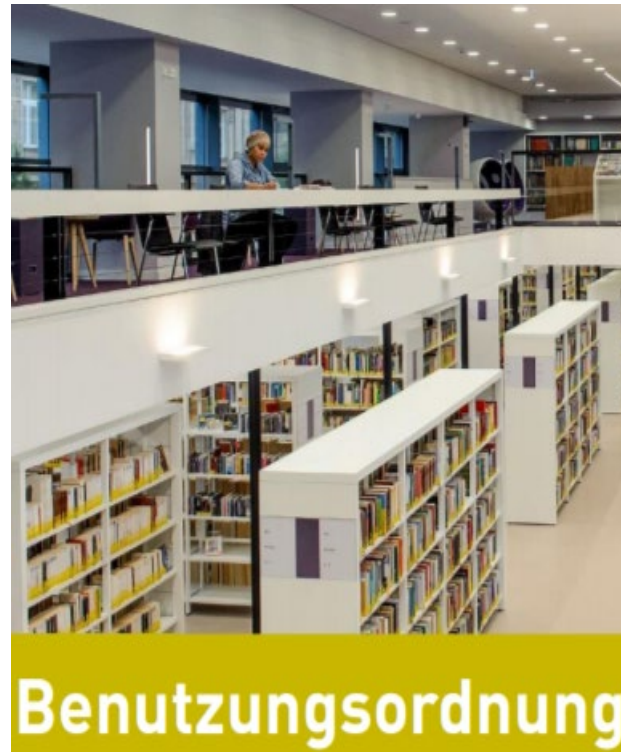
General rule: be considerate of others!

- Students are working in the library:
 - Conversation only in a low voice
 - Phoning only in the entrance area
- Please dispose of the waste yourself
- Do not relocate books, but put them back in their place on the shelf



Using the library / Loan

- „Library regulations“ = fixed rules
- Lending with student card (registration obligatory)
- Library loan free of charge
- Up to 35 items can be borrowed at the same time



Loan Periods

Kind of media	Loan period	Prolongation
Books CDs, DVDs, CD-ROMs, videos	3 weeks	Up to five times!
Journals	3 days	Not renewable!
Newspapers	Not for loan !	
Reference collection („red dot“)	Not for loan !	

Overdue Fines

Exceeding the loan period by...

- 1 week per media unit € 1,-
 - 2 weeks per media unit € 2,-
 - 3 weeks per media unit € 4,-
- total € 7,-**



Opening hours

Monday - Friday 9 am - 7 pm

Saturday 10 am - 3 pm

service time

(consulting service, cash box, interlibrary loan etc.)

Monday – Friday 9 am - 3 pm

+ 24/7- access for students of the SRH-University!

suspended due to pandemic!!!

Restrictions due to CORONA*

* Until further notice in accordance with government regulations!



Basis: Hygiene rules of the SRH University Heidelberg

- Access to work and shelf area only with 3G proof + registration (luca-App)
- Opening hours: Monday - Friday || 9 am – 7 pm
- Click & Meet: 20 individual workplaces accessible after registration (NO group work!)
- Lending and return of media possible at the self-service terminal
- Copying and scanning of library collections also possible



In addition (continuous):

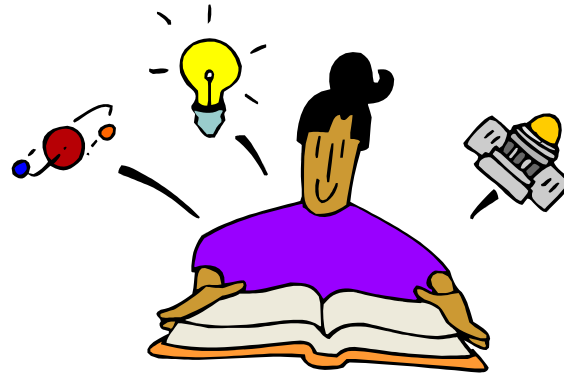
- Click & Collect: Pre-order and lending service for library media
- Delivery service for journal articles
- Offer of the digital library: <https://www.hochschule-heidelberg.de/en/study-at-srh/eat-live-and-learn-on-campus/library/digital-library/>

Details on our homepage :
<https://www.hochschule-heidelberg.de/en/study-at-srh/eat-live-and-learn-on-campus/library/>

OTHER LIBRARIES IN HEIDELBERG

- > University Library
- > Library of the University of Education
- > Public Library

Thanks and much success in studying!



Armin Vetter
SRH Hochschule Heidelberg
Bibliothek
Bonhoefferstraße 8
69123 Heidelberg
T +49 6221 6799 946
Bibliothek.HSHD@srh.de